

December and January 24/25 Vacation Care

49a Kensington Way, Burton (Access via Brookfield Ave)

Ph: 0488 200 207

Director: Michelle Haywood

Assistant Director: Katie Basile

Email: oshc.burton869@schools.sa.edu.au

Our OSHC recognizes the many cultures that attend our service





**Monday 16th
 of December**

Incursion
 Outcomes 1 & 5



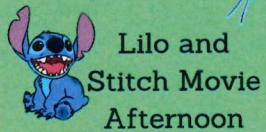
**TROPICAL
 DAY**

Get ready to enjoy a
 super tropical day at
 OSHC! Come dressed up
 if you wish and explore
 Hawaiian Culture



**Snow
 Cones**

Christmas
 Beaded
 Keychains



Lilo and
 Stitch Movie
 Afternoon



**Game of
 Master**

Snack: Pinwheels

**Tuesday 17th
 of December**

Excursion
 Outcomes 1,2, 4 & 5

Bowling
 at Salisbury
 Bowland
 Please arrive by
 9am Approx
 12:30 return to
 OSHC



Making
 Gingerbread
 houses to
 share at
 snack time

Write your last
 minute wishes to
 Santa



MAKE A
 CHRISTMAS
 CARD



Drip, Drip, Drop

Snack: Gingerbread houses
 and Fairy Bread

**Wednesday 18th
 of December**

Incursion
 Outcomes 1 & 2

**Waterplay
 Day**

Enjoy Slip and
 Slides,
 Sprinklers and
 a BBQ



Christmas
 Cookie
 Making

RED ROVER

The Christmas
 Chronicles
 Movie
 Afternoon



Snack: Savoury Platter

**Thursday 19th
 of December**

Excursion
 Outcomes 1, 4 & 5



HOYTS SALISBURY
 PLEASE ARRIVE TO OSHC BY 8:45AM
 APPROX RETURN 12:45 PM

Waterplay and Watergames
 Bring your Waterguns and a
 spare change of clothes

Christmas
 Slime



MAKE A
 SENSORY
 BOTTLE

Snack: Yoghurt Cones

**Friday 20th
 of December**

Incursion
 Outcomes 1 & 2



**Christmas
 Pyjama Day**

Wear your favorite Christmas
 themed Pyjamas to OSHC for a
 chill last day for the year

ANTLER
 TOSS



Decorate
 Stockings



Grinch Crafts and
 Experiences

Snack: Popcorn



**Monday 6th
of January**

Incursion
Outcomes 1, 2 & 3



Tie Dye Hats



Guess who the baby is. Please bring in a photo from when you were a baby



Red Light Green Light
Make some yummy pet treats to take home

Snack: Dino Nuggets and hot chips

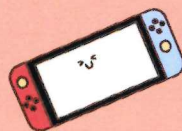
**Tuesday 7th of
January**

Incursion
Outcomes 1, 2 & 3

WHEELS DAY

Please bring along your small wheels to enjoy throughout the day.

Remember! No Helmet
No Riding



NINTENDO
SWITCH
PLAY TIME

Shrinky
Keychains



RED ROVER

Snack: Pasta Bake

**Wednesday 8th
of January**

Excursion
Outcomes 1 & 2



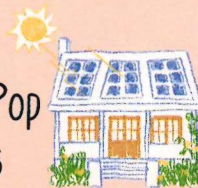
WIZBANG 2-4pm

Approx Departure 1:15pm
Approx return 4:45pm

KAHOOT IN
THE MORNING



Paddle Pop
Houses



SHAVING CREAM PLAY
AND BADMINTON

Snack: Pinwheels

**Thursday the
9th of January**

Incursion
Outcomes 1,3 & 4

Ooey Gooley Mud Day

Come in your old clothes, and bring a spare change of clothes.

What's the best way to finish off mud play?
Waterplay of course.
Please provide a bag for dirty clothes and a towel for your child/ren



Soccer
game



Finding Dory
Movie
Afternoon



Snack: Popcorn

**Friday the 10th
of January**

Incursion
Outcomes 1 & 2

Make Dumplings at OSHC

A treat at snack time.
Please still send lunch for your children



Nature Play
and playdoh with natural resources



Learn "Hello" in different languages

Encanto
Movie
Afternoon

INDOOR
CRICKET

Snack: Nachos

December/ January Vacation Care 24/25

**Monday the
13th of January**
Incursion
Outcomes 1 & 2

BREAKING NEWS
Burton OSHC News Room

Spend the day filming news reports around the OSHC. What major events will happen that our crew will capture?

JUST DANCE

NETBALL SKILLS

Shaving Cream Play

Snack: Toasties

**Tuesday the
14th of January**
Excursion
Outcomes 1, 2 & 3

SONIC THE HEDGEHOG

SALISBURY HOYTS
SONIC 3

Please arrive to OSHC by 8:45am
Approx return 12:45 pm

Basketball in the Gym

Sonic Nintendo Switch Game

MAKE A SONIC HAMA BEAD

Snack: Yoghurt Cones

**Wednesday the
15th of January**
Excursion
Outcomes 1 & 2

Funtopia

PROSPECT
PLEASE ARRIVE AT OSHC
BY 11:30AM APPROX
RETURN 2:30PM

Ice Archaeology

Make your own stickers

Popcorn Chasey

SA ROCKS ROCK PAINTING

Snack: Smoothies

**Thursday the
16th of January**
Incursion
Outcomes 1,3 & 4

Magic Day

Come for a magical day at OSHC! Wear your favourite magical costume!

Nature Potions & Mud Kitchen

Make Galaxy Jars

HOGWARTS SORTING HAT

4 Corners

Snack: Chicken Lettuce Wraps

**Friday the 17th
of January**
Incursion
Outcomes 1, 2 & 3

Learn to Beatbox

11:30am -
Approx 2:30pm

Peg Animal Craft

Earth Hour!
(Add something)
Spend just one hour using no power at all.

Among Us Group Game

Snack: Pasta Salad

December/ January Vacation Care 24/25

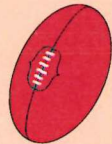
**Monday the
20th of January**

Incursion
Outcomes 1, 2 & 3

**Plaster
Fun
House at
OSHC**



**MARKS UP
AND FOOTY
GAME**



**Disco In
the
Afternoon**

**HOMEMADE
SAUSAGE ROLLS
FOR SNACK**



Snack: Sausage Rolls

**Tuesday the
21st of January**

Incursion
Outcomes 1, 2 & 3

**LITTLE NINJAS
INCURSION**



10:30AM

**LONGEST
BASKETBALL
GOAL**



**MINECRAFT
ON THE
SWITCH**



Ninja Craft

**Kung Foo Panda
Movie Afternoon**

Snack: Popcorn

**Wednesday the
22nd of January**

Incursion
Outcomes 1 & 2

*Paint
&
Shake*

Paint a birdhouse and
enjoy a milkshake

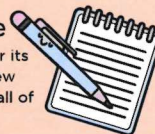


HANDBALL

**Box
Construction**



All About Me
As we begin a new year its
time to learn some new
interesting facts about all of
our children



Snack: Make your own wrap

**Thursday the
23rd of January**

Incursion
Outcomes 1,3 & 4

**Electronic
Day**

Fun day full of Electronics.
Please do not bring any
electronics from home. OSHC
will provide all electronics for
the day

TALENT SHOW

Sensory Play

**Rainbow
Craft**



Golden Child

Snack: Fairy Bread

**Friday the 24th
of January**

Incursion
Outcomes 1 & 2

GooRoo

ANIMATION
Back by popular demand
is GooRoo with their
Claymation workshop
9am - 3pm



**Chalk
Drawing**

Wreck It
Ralph
Movie



Poison Ball



All About Me
We continue on with our
All About Me and
continue to get to know
our children even more

Snack: Ice Cream

Operating Hours

OSHC operates between the hours of 6.30am and 6.00pm.
Children who are not picked up after 6.00pm may incur late fees.

Fees

\$66.00 per day, per child. This is our full fee without Government Assistance

Bookings

Bookings must be made via the HubHello App.
Any outstanding fees are to be paid in full before booking
New families must complete an online enrolment.
Please see the Director or Assistant Director for new enrolments.

Ratios

1:5 Water Excursions
1:8 Excursions
1:15 OSHC – Burton Primary School

Excursions

Please do not send spending money.
Excursions are subject to weather conditions,
We will provide you with as much notice as possible if an excursion is to change.
Transport via Chartered Bus with seatbelts
Approximately 48 children attending and 6 educators

Timely Arrival

Please ensure your child has arrived by the designated time.
Please ring the OSHC mobile if you are late.
If your child is not on site at the designated time, You have the option to drop your child to the venue. Please contact the OSHC mobile on 0488 200 207 to notify staff if this occurs

Risk Assessments

Risk Assessments have been undertaken and are available on request.
Incursions and Excursions are subject to Covid Restrictions

Cancellations

Please advise cancellations by the last Friday of each term.

My Time Our Place

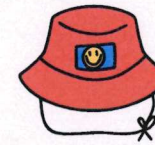
The My Time, Our Place framework helps care services to develop opportunities for school aged children to participate in leisure and play-based activities that respond to their needs, interests and choices.

Outcomes for Children

Outcome 1: Children have a strong sense of identity
Outcome 2: Children are connected with and contribute to their world
Outcome 3: Children have a strong sense of wellbeing
Outcome 4: Children are confident and involved learners
Outcome 5: Children are effective communicators

What to Bring

Please ensure that you send a school hat, drink bottle, recess and lunch for your child/ren.



Food

Please refer to the program for when extra food or lunch is provided. When meals/snacks are provided we ensure we meet the needs of all children. Please provide enough healthy snacks for your child.

Clothing

Please send your child/ren in sun smart clothing and a hat, suitable for the weather conditions. OSHC does NOT provide spare hats for children.



Allergies

We have children enrolled in our service that have allergies to nuts. Please make sure that you do NOT send your child/ren with products that contain nuts.



Medication

Please communicate if your child has developed a medical condition or any changes concerning your child's medication. If your child requires medication please make sure you have completed an up to date care plan. Please see staff to discuss further.